

Pointhouse

EVA 6

Design **Arter&Citton**

Scheda tecnica
/ Technical sheet



Sedia iconica di Pointhouse, disponibile in una vasta gamma di materiali, colori e finiture di scocca e fusto

Eva Family si inserisce perfettamente negli ambienti più diversi: dall'ufficio agli spazi pubblici, a quelli della casa. La scocca è realizzata in polipropilene rinforzato con fibra di vetro, con rivestimento in cuoio, pelle o tessuto. Il fusto è disponibile in 5 modelli differenti tra loro:

- Eva 1, fusto in pressofusione di alluminio
- Eva 2, fusto in tubolare a sezione tonda, impilabile
- Eva 4, fusto in tubolare a sezione triangolare
- Eva 5, fusto in legno massello di frassino tinto rovere

Eva è inoltre disponibile in versione sgabello, con la medesima scelta di materiali e finiture per la scocca e con il fusto in tubolare a sezione triangolare.

/Pointhouse's iconic chair, available in a wide range of materials, colours and structure or seat finishes

Eva family fits perfectly in the most various spaces: from the office to public spaces, to your own home.

The seat is made by fiber glass reinforced polypropylene, with a leather, similar leather or fabric cover.

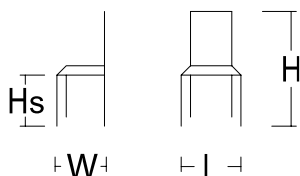
The structure is available in five different models:

- *Eva 1, with die-casted aluminium structure*
- *Eva 2, with round tubular structure, stackable*
- *Eva 4, with triangular tubular structure*
- *Eva 5, with oak painted solid ash structure*

Eva is also available in the stool version, with the same material choice for the seat, but only with the triangular section tubular structure.

MISURE / SIZE:

L.46XW.54XHS.65XH.107



PESO & IMBALLO / WEIGHT & PACKING:



Numero colli
Boxes number

EVA 6

Box: 51,5x54x54
m3 0,150
tot. Kg. 11,5

FINITURE / FINISHES:**Struttura e gambe / Structure and legs:**

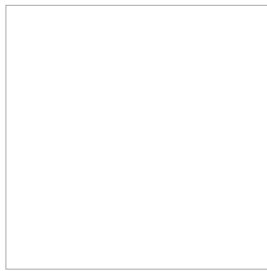
Metallo verniciato
Painted metal



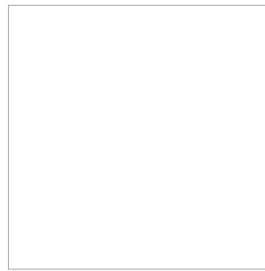
0G GHISA
CAST IRON



02 GRIGIO ALLUMINIO
ALUMINIUM GREY



04 BIANCO LUCIDO
POLISH WHITE



06 BIANCO OPACO
MATT WHITE



07 NERO OPACO
MATT BLACK



15 GRAFITE OPACO
MATT GRAPHITE 



18 GRIGIO SILVER
SILVER GREY



22 TORTORA
DOVE GREY



0P GRIGIO PIOMBO OPACO
MATT LEAD GREY

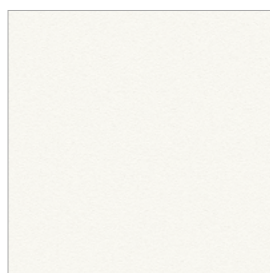
FINITURE / FINISHES:**Seduta / Seat**

Polipropilene
Polypropylene

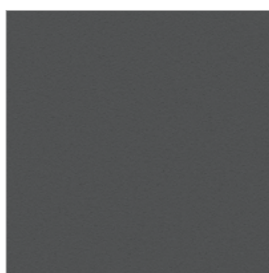
Polipropilene / Polypropylene

Polimero termoplastico caratterizzato da un elevato carico di rottura, una bassa densità, una buona resistenza termica e all'abrasione.

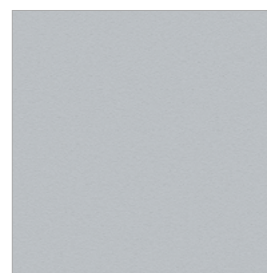
Thermoplastic polymer characterized by a high tensile strength, low density, good thermal and abrasion resistance.



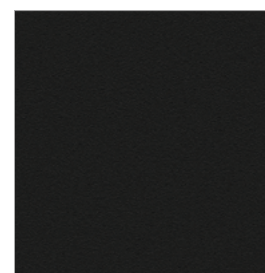
E1 BIANCO
WHITE



E3 GRAFITE
GRAPHITE



E4 GRIGIO CHIARO
LIGHT GREY



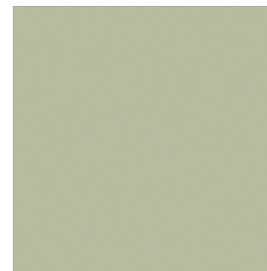
E7 NERO
BLACK



E9 TORTORA
DOVE GREY



EC ROSSO
RED



ED VERDE
GREEN



EE GIALLO
YELLOW

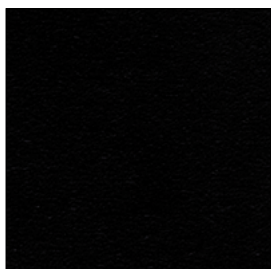
Cuoio rigenerato / *Regenerated leather*

E' un materiale ecologico composto minimo dal 60% di fibre di cuoio (sfridi di pellame) ottenuto con un processo industriale. Il cuoio viene finemente tritato e miscchiato a gomma naturale fino ad ottenere un composto omogeneo che viene lavorato in fogli di diverso spessore. Il prodotto finale al tatto e alla vista è simile alla vera pelle.

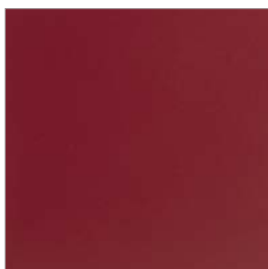
This is an ecological material composed of minimum 60% of leather fibers obtained by an industrial process. Leather is finely ground and mixed with natural rubber to obtain a homogeneous compound that is processed in sheets of different thickness. The final product is similar to the touch and to the eye to real leather.



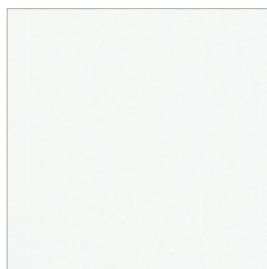
41 TESTA DI MORO
DARK BROWN



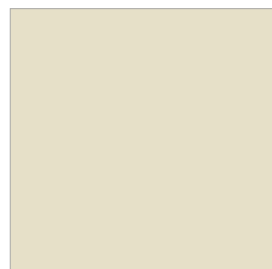
42 NERO
BLACK



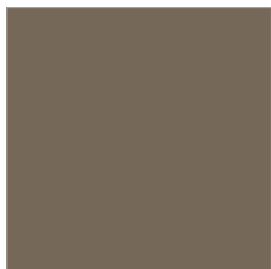
43 ROSSO
RED



44 BIANCO
WHITE



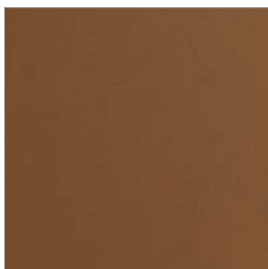
46 SABBIA
SAND



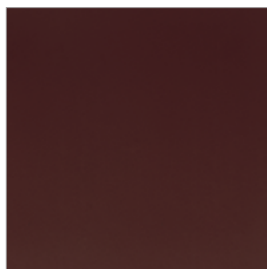
47 TORTORA
DOVE GREY



R1 GRAFITE
GRAPHITE



R2 COGNAC
COGNAC



R3 BORDEAUX
BORDEAUX